



# THE DIGEST

WIDENER UNIVERSITY SCHOOL OF LAW ~ HARRISBURG CAMPUS  
law.widener.edu

## CALENDAR OF EVENTS

### February

- 14 **Valentine's Day**
- 15 **Women's Law Caucus Bake Sale**
- 14 **Harrisburg Moot Court/Final Round**
- 16 **In-Service Day (no classes)**
- 17 **Law Journal Symposium**
- 21 **ExamSoft Registration/Mid Terms**
- 22 **Pizza and Policy in the Pit**
- 23 **BLSA Presentation**
- 23 **Delaware/Harrisburg Moot Court Competition Final Round (Delaware Campus)**

### March

- 1 **Food & Drug Law Presentation**
- 7-11 **Spring Break**
- 22 **Pizza and Policy in the Pit**
- 22 **Jurist in Residence Presentation**
- 26 **Barrister's Ball**



The Women's Law Caucus



## Valentine's Day Bake Sale

All Proceeds to YWCA-Harrisburg

Enjoy a cupcake, brownie, cookie, and other sweet assortment! Buy a delicious treat for a friend or classmate!

**February 14th**  
**10 a.m. to 6 p.m.**

WLC Table in the Pit



Interested in contributing to the bake sale?

Contact: Cate Malycke at [cjmalycke@mail.widener.edu](mailto:cjmalycke@mail.widener.edu).

REGISTRAR'S INFORMATION LINE

717-541-1941

STUDENT INFORMATION LINE

717-541-1939

## *The Contribution of the Commonwealth Court to Pennsylvania Jurisprudence Since 1970*

Thursday, February 17, 2011

Widener University School of Law-Harrisburg Campus Room A180

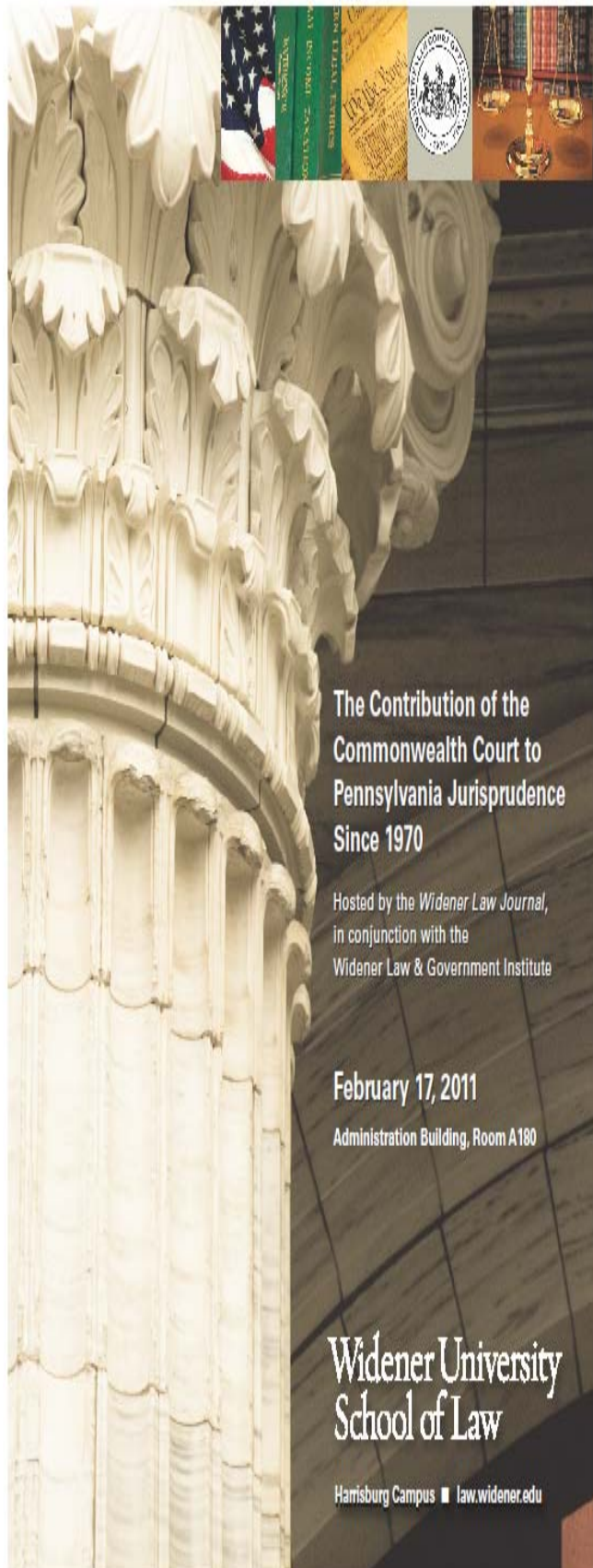
6 CLE credits (5 substantive, 1 ethics)

Contact: 717-541-3965

The Commonwealth Court of Pennsylvania has the unique distinction of being the only state intermediate appellate court dedicated to public law. Since the Commonwealth Court was established in 1970, it has been instrumental in shaping modern administrative law in Pennsylvania. After over forty years, almost every area of state public law, from workers' compensation to environmental and zoning law, has been substantially influenced by this remarkable Court. Because of its unique jurisdiction, a proper analysis of the current state of Pennsylvania governmental law must begin with an understanding of the contributions and heritage of the Commonwealth Court.

On February 17, 2011, the *Widener Law Journal*, in conjunction with the Widener Law & Government Institute, will host a symposium at the Widener University School of Law-Harrisburg devoted to examining the exceptional influences of the Commonwealth Court to Pennsylvania case law. The symposium, entitled *The Contribution of the Commonwealth Court to Pennsylvania Jurisprudence Since 1970*, will consider various historical and contemporary decisions made by the Court and analyze how these rulings shaped the present state of Pennsylvania administrative law. Participants include current and past judges of the Commonwealth Court, a justice of the Supreme Court of Pennsylvania, a former Pennsylvania attorney general, and distinguished and prominent administrative law practitioners and professors.

The symposium will focus on several fields of administrative law greatly impacted by the Commonwealth Court. Each of the presenters is an expert in his or her discipline, which includes the Pennsylvania Right to Know law, prisoner litigation, and public utility law. In addition, prior and currently sitting judges will provide commentary and offer a unique perspective by those responsible for shaping Pennsylvania administrative law.



## Widener University School of Law Food and Drug Law Association and The Food and Drug Law Institute Present

**FDA Matters: Criminal and Civil Enforcement, Ethics, Accountability and Beyond** The Food and Drug Law Association of Widener University School of Law (FDLA) in partnership with the Food and Drug Law Institute (FDLI) is hosting an inaugural program addressing food and drug law regulation. The program will address cutting edge issues related to enforcement of the United States Food, Drug and Cosmetic Act. Top government officials and renowned experts from industry and academia will address legal and regulatory matters specifically related to civil and criminal enforcement. Ethical issues, professional conduct standards, and accountability issues will be explored. The panel will address the impact of landmark legal cases and future direction of enforcement. Participants will also have the opportunity to learn the latest in enforcement trends. Audience participation is encouraged. Questions about the program should be directed to either Ms. Sara Alsaleh, at [salsaleh@mail.widener.edu](mailto:salsaleh@mail.widener.edu) or Ms. Termini at [rbtermini@mail.widener.edu](mailto:rbtermini@mail.widener.edu).

*2 Continuing Legal Education Credits (including 1 Ethics Credit) Pennsylvania and Delaware*

### **Speakers**

- *Ms. Karyn M. Campbell, FDA Director of Investigations, Philadelphia Office*
- *Ms. Theresa P. DeLaine, Sr. Medical Sales Specialist, Eisai Inc.*
- *Mr. John Pease, Assistant U.S. Attorney, Chief, Government and Healthcare Fraud for the Eastern District of Pennsylvania*
- *Ms. Roseann B. Termini, food and drug law professor at Widener School of Law Delaware/Hrbg. formerly Sr. Deputy Attorney General and Corporate Counsel*

### **Date, Time, Locations, & Registration**

- **Tuesday, March 1, 2011 3:00pm – 6:00pm**
  - ▶ 3:00pm – 3:30 pm: Registration, Check In, and Complimentary Refreshments
  - ▶ 3:30pm – 5:30pm: Program
  - ▶ 5:30pm – 6:00pm: Complimentary Refreshments and Hors d'oeuvres
- **Widener University School of Law**
  - ▶ Wilmington, Delaware campus: Vale Court Room in the Main Law Building
  - ▶ Harrisburg, Pennsylvania campus: Teleconferenced from Delaware to Harrisburg campus Room L205. Will relocate to Room A180 if necessary.
- **YOU MUST PRE-REGISTER with Connie Sweeney ([cmsweeney@widener.edu](mailto:cmsweeney@widener.edu)) by February 28, 2011! You may make program payments when registering.**
  - ▶ Students: **FREE** with Student ID
  - ▶ Government, Academic, & Professional Association Members: \$25.00
  - ▶ All Others: \$50.00

**Who Should Attend:**

- *Pharmaceutical, Device, Biologics, Food, Cosmetic, and Dietary Supplement Manufacturers, Distributors, and Sales Representatives.*
- *Attorneys*
- *Health Care Professionals*
- *Government Officials*
- *Academic Professionals*
- *Industry Consultants*

**Program Topics of Interest:**

*FDA Enforcement Mechanisms*

*Compliance Initiatives*

*FDA Administrative Actions*

*Civil Enforcement*

*Criminal Enforcement*

*Financial Disclosure*

*Landmark Cases*

*Global Settlements*

*Ethics*

*Accountability*

*Professional Standards*

*The Future of Enforcement*

**Special Acknowledgements**

- Food and Drug Law Institute (FDLI)
- Widener University School of Law staff; CLE program coordinator Connie Sweeney and technical support staff.



Widener University  
School of Law

**Widener University**

**February's "Winner of Widener Indispensible Essentials" and the future alumni spotlight is 1L BARBARA GRIMAUD.**

This month's W.O.W.I.E., Barbara Grimaud, is a graduate of the United States Naval Academy with a degree in Political Science. While attending the Academy, she participated in their athletic program as a javelin thrower on the track team.

After graduating from the U.S.N.A., Barbara was stationed at Diego Garcia, British Indian Ocean Territory. Barbara says while stationed there she "was able to free swim with endangered turtles, manta rays, barracudas, and sharks - thankfully without incident." This territory is now part of Chagos Archipelago, the world's largest marine reserve.

After her service in the military, Barbara was drawn to Widener-Harrisburg because of the reputation it has among the legal community and general public in Pennsylvania. She was inspired to attend law school by her father: "Throughout his career, he has done state constitutional, environmental and criminal work, but I didn't fully understand the magnitude of his work and the impact it has on others until I was personally involved in legal proceedings my junior year of high school. My father took on the task of abolishing Sunday protection laws, and that year, I, and other Sabbatharians played in the Pennsylvania Interscholastic Athletic Association Volleyball State Championship tournament with reduced hardship for our Seventh-day Adventist beliefs. At 16 years old, I was voiceless. I realized there are many other voiceless people that need a lawyer to address and fight for their rights our laws afford them. Through his profession, my father showed me he is able to be that advocate, and that is inspiring."

As a first-year law student at Widener University School of Law's Harrisburg campus, Barbara has joined two organizations: The Environmental Law Society and Women's Law Caucus. "Both programs have leaders and members that are very enthusiastic in their field of interest, and the 2 and 3Ls have been great mentors," notes the February W.O.W.I.E.

After graduation in May 2013, Barbara plans to return to her hometown of Tunkhannock, PA, to practice law. While she has a keen interest in environmental law, she thinks she will more likely be involved with a general practice as a small town lawyer.

# Student Organizations News

## MOOT COURT HONOR SOCIETY

21st Annual

Harrisburg/Delaware Moot Court

Intrascholastic Competition

**Please come and support the teams competing in the Harrisburg final round of the Moot Court Honor Society Internal Competition. Joe Holaska and Tricia Lontz will face off with Ashley Oakey and Jen Smith. The winners of this round will take on the winners of the Delaware final round in the Harrisburg/Delaware competition on February 23<sup>rd</sup> on the Delaware campus. The Harrisburg final round will take place in room A180 at 6:00pm on February 14, 2011.**

**The final round of the competition between Harrisburg and Delaware will be held on Wednesday, February 23, 2011, at 6:00 p.m. on the Delaware Campus. Any questions regarding the competition can be forwarded to Shelby Grabowski at [shelby.grabowski@gmail.com](mailto:shelby.grabowski@gmail.com).**



Widener University

### Legal Perspectives in African American History

A Weekly Lecture Series on African American Landmarks  
that Changed American Legal History  
February 2011



**February 2, 2011 Professor Starla Williams**  
1:00 pm Lunch: Pizza and Soda  
**February 9, 2011 Professor Randle Pollard**  
11:00 am Continental Breakfast: Pastries  
**February 23, 2011 Professor Tonya Evans**  
11:00 am Continental Breakfast: Fruit Tray

Sponsored by:  
Black Law Students Association  
Harrisburg Campus Chapter



# WIDENER Night

@



**215 N 2<sup>nd</sup> Street**

***"A Semi Semi-Formal Event"***

**Friday February 18<sup>th</sup> – 9-12 p.m.**

**\$5 Cover Charge**

**Drink Specials TBA**

**DJ SAT-ONE from Philadelphia**

**Cover Charge Benefits Central PA Food Bank**



**Sponsored by Phi Alpha Delta**





**MID-TERM – February 21, 2011**

**FINAL EXAM – April 8, 2011**

**Register with the Registrar's Office by:**

**1. Signing book on the counter**

**or**

**2. Completing the on line form**

***Note: Even if you have downloaded ExamSoft in the Fall, YOU MUST REGISTER WITH THE REGISTRAR'S OFFICE for the Spring Semester.***



# REGISTRAR'S OFFICE

## COMMENCEMENT CEREMONY 2011

**National Anthem.** The Registrar's Office is looking for a member of the graduation class of 2011—including December 2010, May 2011 and July 2011—to sing the National Anthem at the commencement ceremony on Sunday, May 22, 2011. If you are interested or know someone who is, please contact the Registrar's Office.

**Ushers.** The Registrar's Office needs 8-10 reliable students to volunteer as ushers at commencement on May 22. **Qualifications:** Must be willing to work from 9:00 a.m.—12:30 p.m. and have transportation to the Forum in downtown Harrisburg. Ushers must be dressed professionally, sober and willing to deal with excited graduates and families.



The Registrar's Office regular office hours are Monday, Wednesday, Thursday and Friday, 9:00 a.m. until 5:00 p.m. and 9:00 a.m. until 6:00 p.m. on Tuesday. Hours may be extended if necessary during the course of the semester. The office phone number is 717-541-3904.

Please make it a habit to check Campus Cruiser and the Law School Website at [law.widener.edu](http://law.widener.edu) for important announcements.

# CLOSINGS OR DELAYS!!!

THE FOLLOWING STATIONS WILL GIVE INFORMATION ON CLOSINGS OR DELAYS FOR THE HARRISBURG CAMPUS

**WGAL-TV 8**

[www.wgal.com](http://www.wgal.com)

**WHP-TV CBS 21**

[www.whptv.com](http://www.whptv.com)

**WHTM-TV ABC 27**

[www.abc27.com](http://www.abc27.com)

**WLYH-TV 15**

[www.cw15.com](http://www.cw15.com)

**WITF-TV 33 & 89.5 FM**

[www.witf.org](http://www.witf.org)

**WRBT - 94.9 FM**

[www.bobradio.com](http://www.bobradio.com)

**KISS 99.3 FM**

[www.993kissfm.com](http://www.993kissfm.com)

**WRVV - 97.3 FM**

[www.river973.com](http://www.river973.com)

**WLAN - 96.9 FM**

[www.wlan.com](http://www.wlan.com)

**WHP - 580 AM**

[www.whp580.com](http://www.whp580.com)

If you are in doubt as to whether or not the School of Law is closed, please call the Harrisburg Campus Information Line at 717-541-1939.



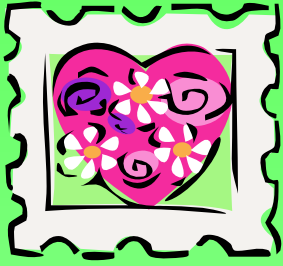
## HARRISBURG LAW NEWS

### Submission information:

The *NEXT* issue of *The Digest* will be published on **February 21, 2011**. All information should be submitted to *Dorothy Koncar*, (dakoncar@widener.edu), Administration Building, by **NOON, Tuesday, February 16th** in order for the news to be published.

### February Birthdays

- Lee Zimmerman, Maintenance
- Phil Ayala, ITS
- Vice Dean Robyn Meadows
- Kim Rebuck, Maintenance



## **SIDEBAR CAFÉ**

**February 14—18, 2011**

*Breakfast from 10:00 a.m. to 11:00 a.m.*

*Lunch from 11:00 a.m. to 2:30 p.m.*

<b>Monday</b>	<b>Kettle Classic</b>	<b>Shrimp &amp; Corn Soup</b>
	<b>Montaque's Deli</b>	<b>Grilled Sausage Sandwich</b>
	<b>Café Feature</b>	<b>Egg &amp; Ham on a Muffin</b>
	<b>Itza Pizza</b>	<b>Broccoli Pizza by the Slice</b>
<b>Tuesday</b>	<b>Kettle Classic</b>	<b>Potato Soup</b>
	<b>Montaque's Deli</b>	<b>Grilled Ham &amp; Swiss Cheese</b>
	<b>Café Feature</b>	<b>Egg &amp; Bacon on a Muffin</b>
	<b>Itza Pizza</b>	<b>Pepperoni Pizza by the Slice</b>
<b>Wednesday</b>	<b>Kettle Classic</b>	<b>IN-SERVICE DAY</b>
	<b>Montaque's Deli</b>	
	<b>Café Feature</b>	<b>CLOSED</b>
	<b>Itza Pizza</b>	
<b>Thursday</b>	<b>Kettle Classic</b>	<b>Butternut Squash Soup</b>
	<b>Montaque's Deli</b>	<b>Turkey Cheddar Wrap</b>
	<b>Café Feature</b>	<b>Egg &amp; Cheese on a Muffin</b>
	<b>Itza Pizza</b>	<b>Meat Lovers Pizza by the Slice</b>
<b>Friday</b>	<b>Kettle Classic</b>	<b>Cream of Tomato Soup</b>
	<b>Montaque's Deli</b>	<b>Cheddar Bacon Melt Sandwich</b>
	<b>Café Feature</b>	<b>Egg &amp; Cheese on a Muffin</b>
	<b>Itza Pizza</b>	<b>Cheese Pizza by the Slice</b>